

Proposed & Existing Ground Floor GA Plans

Scale 1:50 @ A1 / 1:100 @ A3

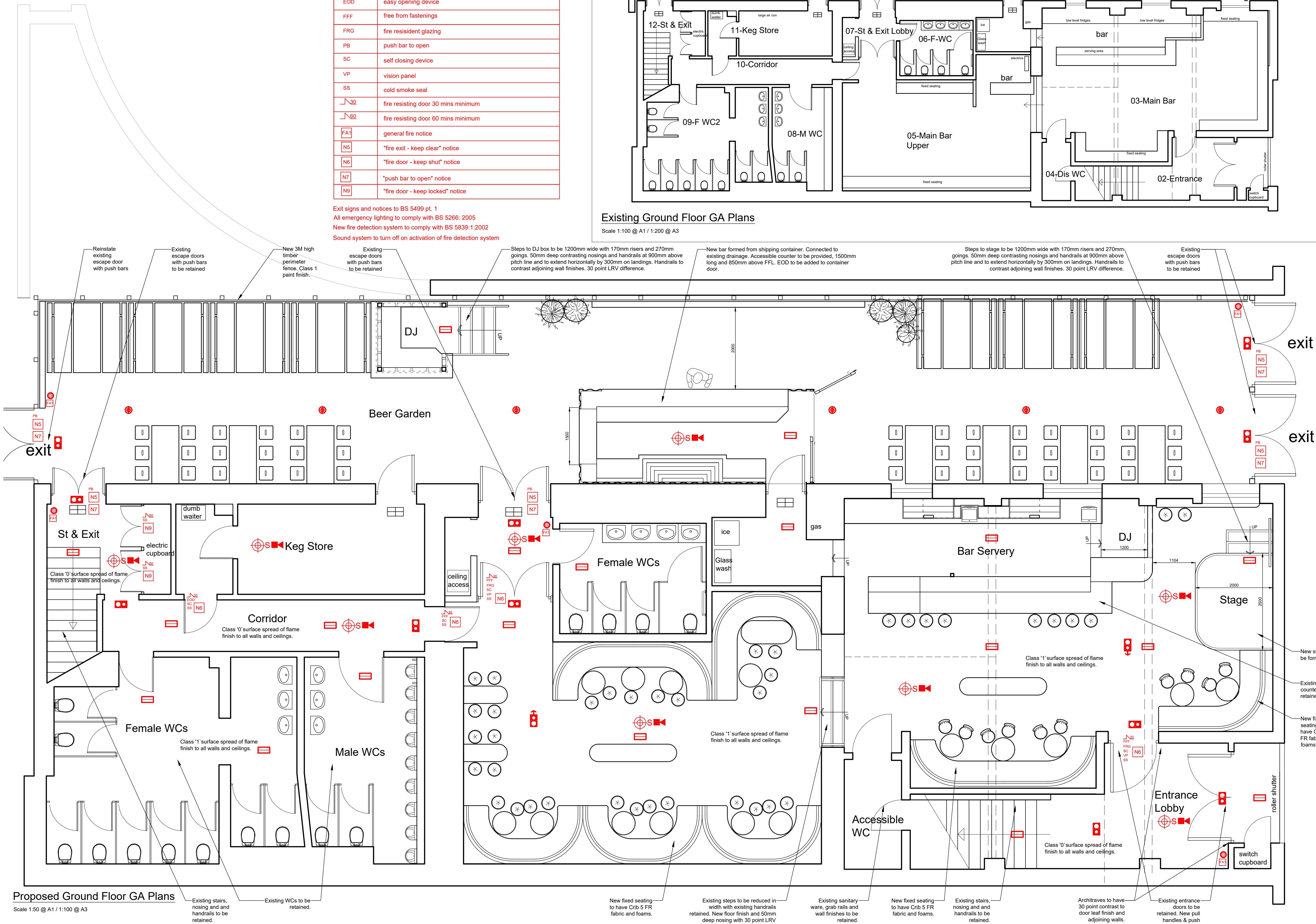
key to fire symbols

	maintained, self contained emergency exit sign with appraote
	Euro legend and 3 hour integral battery pack
	non maintained, self contained ceiling recessed LED emergency lighting with 3 hour integral battery pack
	non maintained, IP65 self contained LED emergency lighting with 3 hour integral battery pack - black finish
	ceiling mounter smoke detector with integrated sounder
	ceiling mounted heat detector with integrated sounder
	smoke detector in roof void with integrated sounder
	fire alarm call point
	fire alarm panel
	easy opening device
	free from fastenings
	fire resident glazing
	push bar to open
	self closing device
	vision panel
	cold smoke seal
	fire resisting door 30 mins minimum
	fire resisting door 60 mins minimum
	general fire notice
	"fire exit - keep clear" notice
	"fire door - keep shut" notice
	"push bar to open" notice
	"fire door - keep locked" notice

Exit signs and notices to BS 5499 pt. 1
All emergency lighting to comply with BS 5266: 2005
New fire detection system to comply with BS 5839-1:2002
Sound system to turn off on activation of fire detection system

Existing Ground Floor GA Plans

Scale 1:100 @ A1 / 1:200 @ A3



GENERAL CONTRACTORS NOTE

All levels and dimensions to be checked on site and any discrepancies should be referred to O'Donnell O'Neill Design Assoc.Ltd. for their direction. Work to figured dimensions ONLY. Do not scale off these drawings. It is the responsibility of the appointed contractor to ensure that both they and their nominated sub contractors, their nominated suppliers, and the client direct nominated sub contractors and suppliers ensure that all materials and workmanship comply with the relevant Building Regulations and that all Health and Safety regulations are implemented. All to be in full compliance with The Building Regulations (Northern Ireland) 2012 Technical Booklets. Refer to engineers drawing for all structural elements details.

REV	NOTE	DATE	INITIAL
*			

new walls - for fire rating refer to Architects details and specifications
existing walls
demolitions



INTERIOR ARCHITECTS & DESIGNERS

1 Upur. Georges Street, Dun Laoghaire, Co. Dublin
tel:01 2300066 fax:01 2145776
email : info@ooda.ie
9 Donegall Street Place BT1 2FN
tel:028 90668363 fax: 028 90663345
email bellast@ooda.ie
www.ooda.ie

STAGE INFORMATION

CLIENT: Silverpine Inns

JOB: LIQUID
10-14 Tomb Street

TITLE: Proposed & Existing Ground Floor GA Plan

SCALE: 1:50@A1
1:100@A3
FILE: 21078

DATE: Aug 2021
DRAWN BY: [Signature]

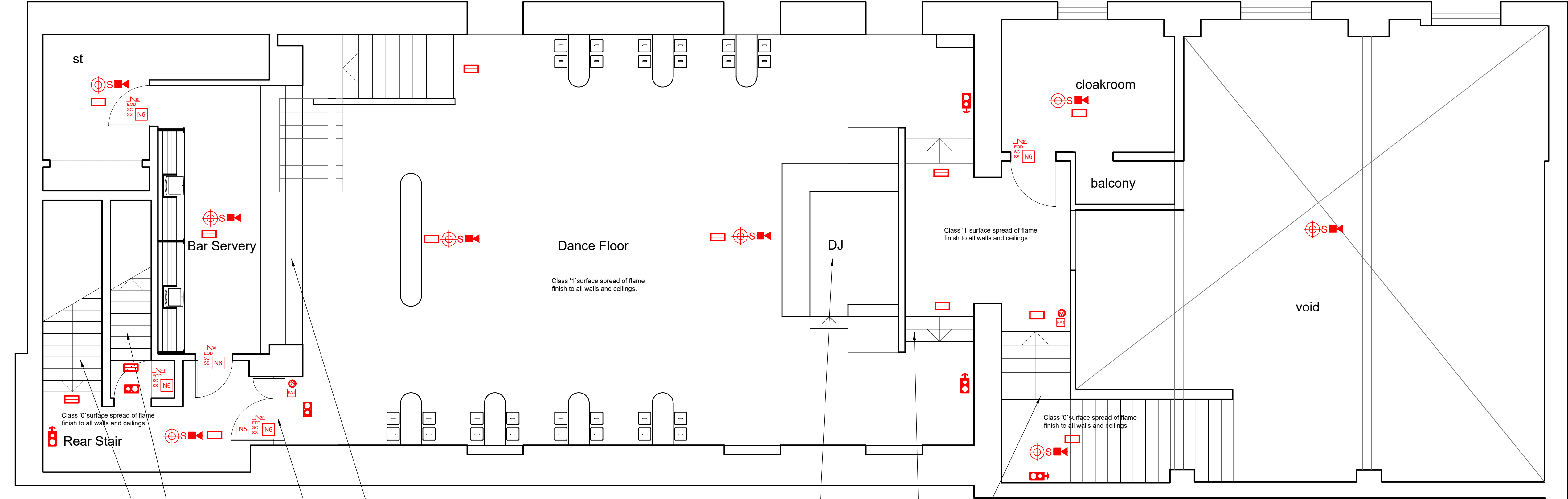
DRAWING NO: 21078 -101BC
REVISION: *

These drawings are copyright © of O'Donnell O'Neill Design Assoc. Ltd who reserve all its rights, title and intellectual property rights in and to all designs, drawings and documentation. No work or designs on these drawings shall be reproduced or copied without written permission.



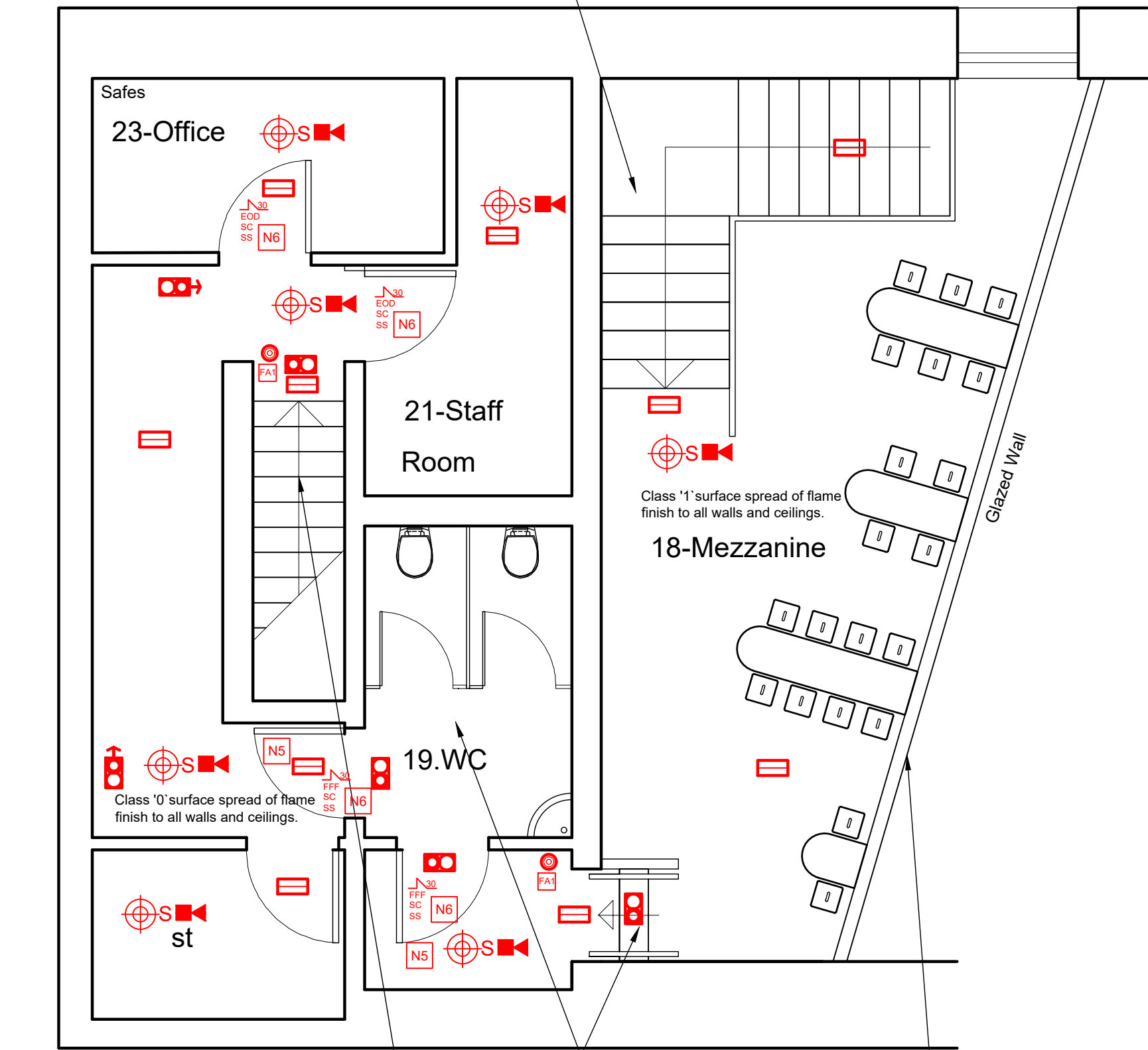
Proposed & Existing First & Second Floor GA Plans

Scale 1:50 @ A1 / 1:100 @ A3



Proposed First Floor GA Plans

Scale 1:50 @ A1 / 1:100 @ A3



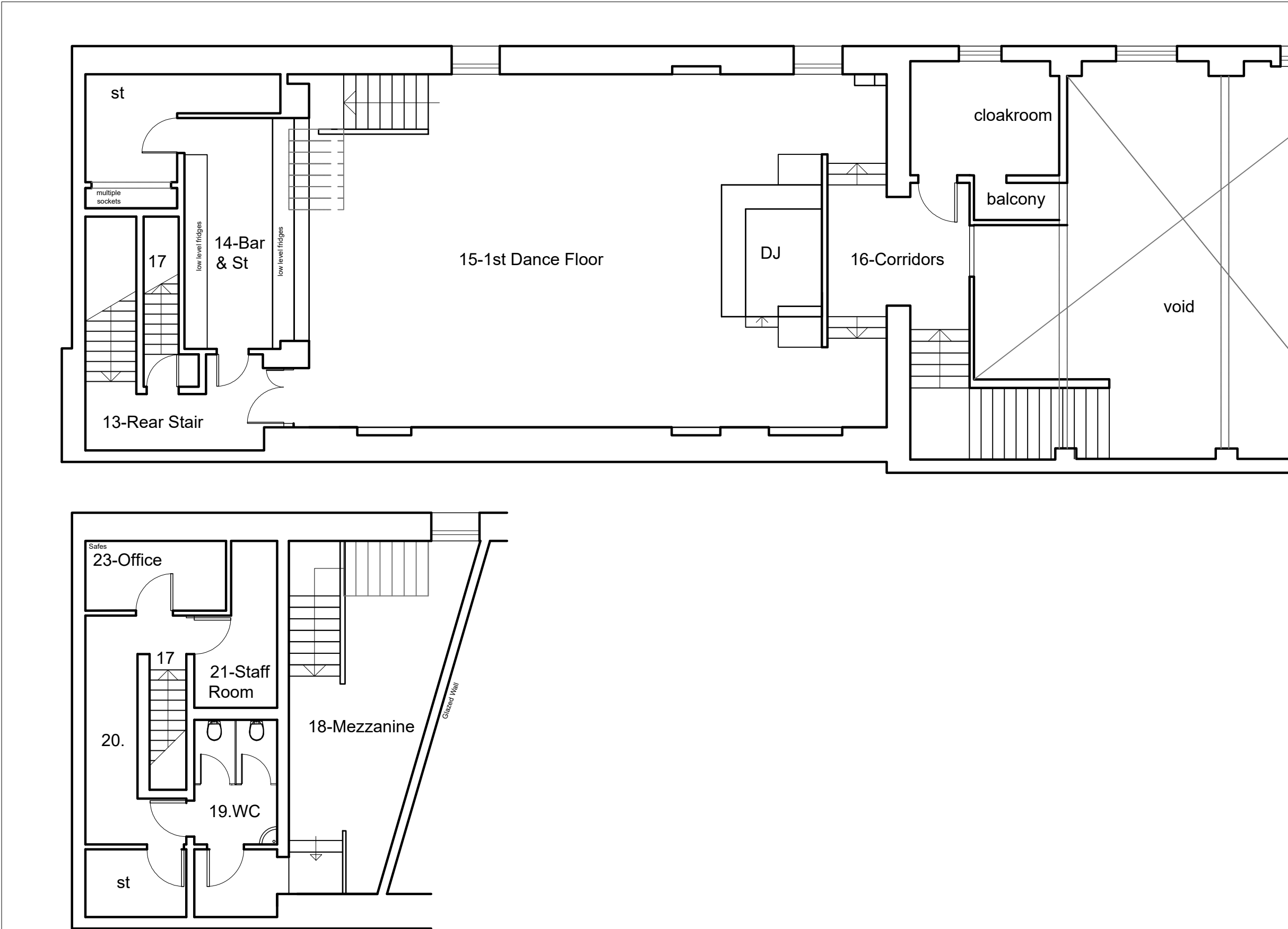
Proposed Second Floor GA Plans

Scale 1:50 @ A1 / 1:100 @ A3

key to fire symbols

	maintained, self contained emergency exit sign with approate Euro legend and 3 hour integral battery pack
	non maintained, IP65 self contained LED emergency lighting with 3 hour integral battery pack - black finish
	non maintained, self contained ceiling recessed LED emergency lighting with 3 hour integral battery pack
	ceiling mounter smoke detector with integrated sounder
	ceiling mounted heat detector with integrated sounder
	smoke detector in roof void with integrated sounder
	fire alarm call point
	fire alarm panel
	easy opening device
	free from fastenings
	fire resistant glazing
	push bar to open
	self closing device
	vision panel
	cold smoke seal
	fire resisting door 30 mins minimum
	fire resisting door 60 mins minimum
	general fire notice
	"fire exit - keep clear" notice
	"fire door - keep shut" notice
	"push bar to open" notice
	"fire door - keep locked" notice

Exit signs and notices to BS 5499 pt. 1
All emergency lighting to comply with BS 5266: 2005
Fire detection system to comply with BS 5839-1:2002
Sound system to turn off on activation of fire detection system



Existing First Floor & Second Floor GA Plans

Scale 1:100 @ A1 / 1:200 @ A3

GENERAL CONTRACTORS NOTE

All levels and dimensions to be checked on site and any discrepancies should be referred to O'Donnell O'Neill Design Assoc.Ltd. for their direction. Work to figured dimensions ONLY. Do not scale off these drawings.

It is the responsibility of the appointed contractor to ensure that both they and their nominated sub contractors, their nominated suppliers, and the client direct nominated sub contractors and suppliers ensure that all materials and workmanship comply with the relevant Building Regulations and that all Health and Safety regulations are implemented. All to be in full compliance with The Building Regulations (Northern Ireland) 2012 Technical Booklets. Refer to engineers drawing for all structural elements details.

REV	NOTE	DATE	INITIAL
A	BACK BAR DISPLAY ADDED IN.	29.09.21	

new walls - for fire rating refer to Architects details and specifications
existing walls
demolitions



INTERIOR ARCHITECTS & DESIGNERS

1 Upr. Georges Street, Dun Laoghaire, Co. Dublin
tel:01 2300066 fax:01 2145776
email : info@ooda.ie
9 Donegall Street Place BT1 2FN
tel:028 90668363 fax: 028 90663345
email bellast@ooda.ie
www.ooda.ie

STAGE

INFORMATION

CLIENT: Silverpine Inns

JOB: LIQUID
10-14 Tomb Street

TITLE: Proposed & Existing 1st & Second Floor GA Plans

SCALE: 1:50@A1
1:100@A3
FILE: 21078

DATE: Aug 2021
DRAWN BY: [Signature]

DRAWING NO: 21078 -102BC
REVISION: *

These drawings are copyright © of O'Donnell O'Neill Design Assoc. Ltd who reserve all its rights, title and intellectual property rights in and to all designs, drawings and documentation. No work or designs on these drawings shall be reproduced or copied without written permission.

